



The ESE 8 RD 8000

Flexible and variable through tipping on both sides





Design and function

The ESE 8 RD 8000 is undoubtedly convincing due to its elegant, but functional design. The symmetrical design ensures optimum weight distribution and provides our customers now with even more storage space for optional accessories.

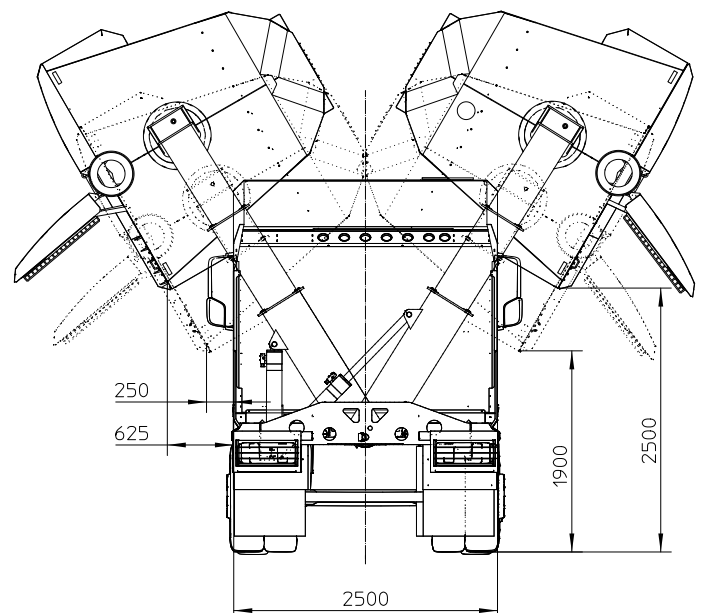
The completely new cooling concept has been integrated in the upper area of the proven hose rack behind the driver's cab, which is accessible from both sides.

There is also additional storage space for two other hose extensions in the specially designed shelves above the stainless steel storage compartments.

With a statically optimised supporting structure and the use of modern materials, the overall weight of the machine could be reduced. This means 1 metric ton more payload for our customers, without exceeding the permissible total weight.

Returning clean air to the environment. This is achieved by the newly developed filters for RSP suction excavators. The filter material has been designed in such a way that support baskets are no longer necessary.

This development minimises the flow losses in the system and improves the cleaning effect of the individual filter cartridges. This reduces the costs enormously for maintenance and service.



Flexible and variable

The possibility of dumping from both sides, combined with variable tipping heights, provide the ESE 8 RD 8000 with a flexibility previously unknown in suction excavators. Whether it is a storage area, a skip or a truck bed, dumping is possible to both sides at variable heights, step widths and tipping angles.

The new central container suspension and the four supports with automatic stand levelling enable flexible dumping on both sides.



Tipping on both sides from 1.90 m to 2.50 m





Operation and intelligence

The RSP Smart Control enables a high-tech control with unprecedented precision. RSP Smart Control allows for automatic positioning of the RSP articulated hose carrier in working or transport position at the press of a button.



With horizontal and vertical movements, the position of the last cantilever member in the respective axle will be kept constant through the automatic adjustment of the other cantilevers. Working is even safer, more precise and more comfortable in such a way.

Our safety-oriented decentralised control system gives you the edge in comfort and operation. Increased ease of maintenance and control are the outstanding advantages of the decentralised control concept.



The electronic on-board information system with the large monitor facilitates keeping an eye on all operating conditions of the machine - both in the cockpit and at the rear when working. Information, registration, control, monitoring: It reliably provides all decisive data and parameters on the operating status of the ESE 8 RD 8000.

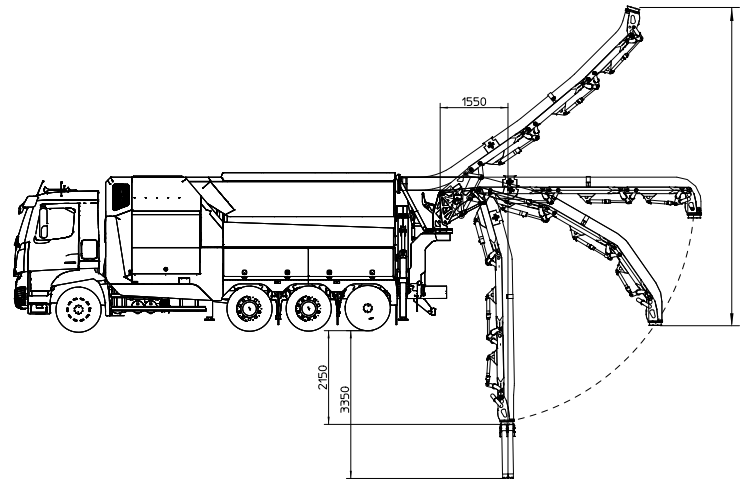
The RSP CONNECT linked to the control system delivers information on the current status of the vehicle on the web at any time.

More efficient operation planning through GPS positioning, reduction of fuel consumption through speed control, and even theft protection or machine misuse are just some of the advantages.

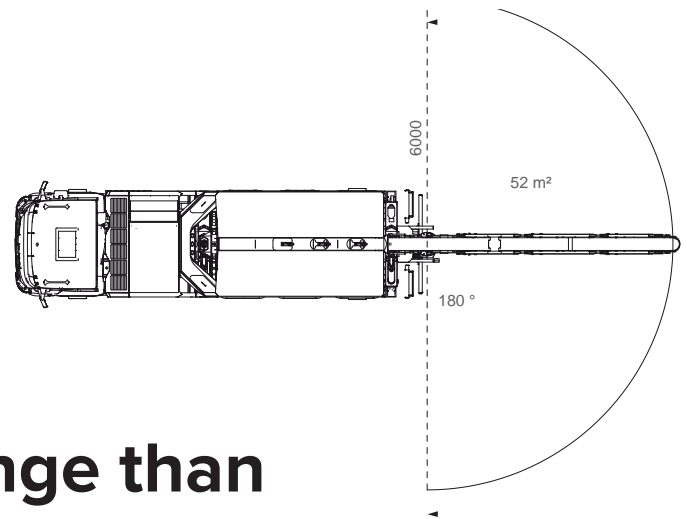


Technical details

- The **ESE 8** is equipped with the powerful double fan. 3-stage and 4-stage fans will also be available soon.
- **8m³** container
- Hydraulic articulated hose carrier with extended range
- Maximum storage space on both sides
- available for the Mercedes Benz AROCS



Working range of the RSP articulated hose carrier



20% more working range than with other models.



