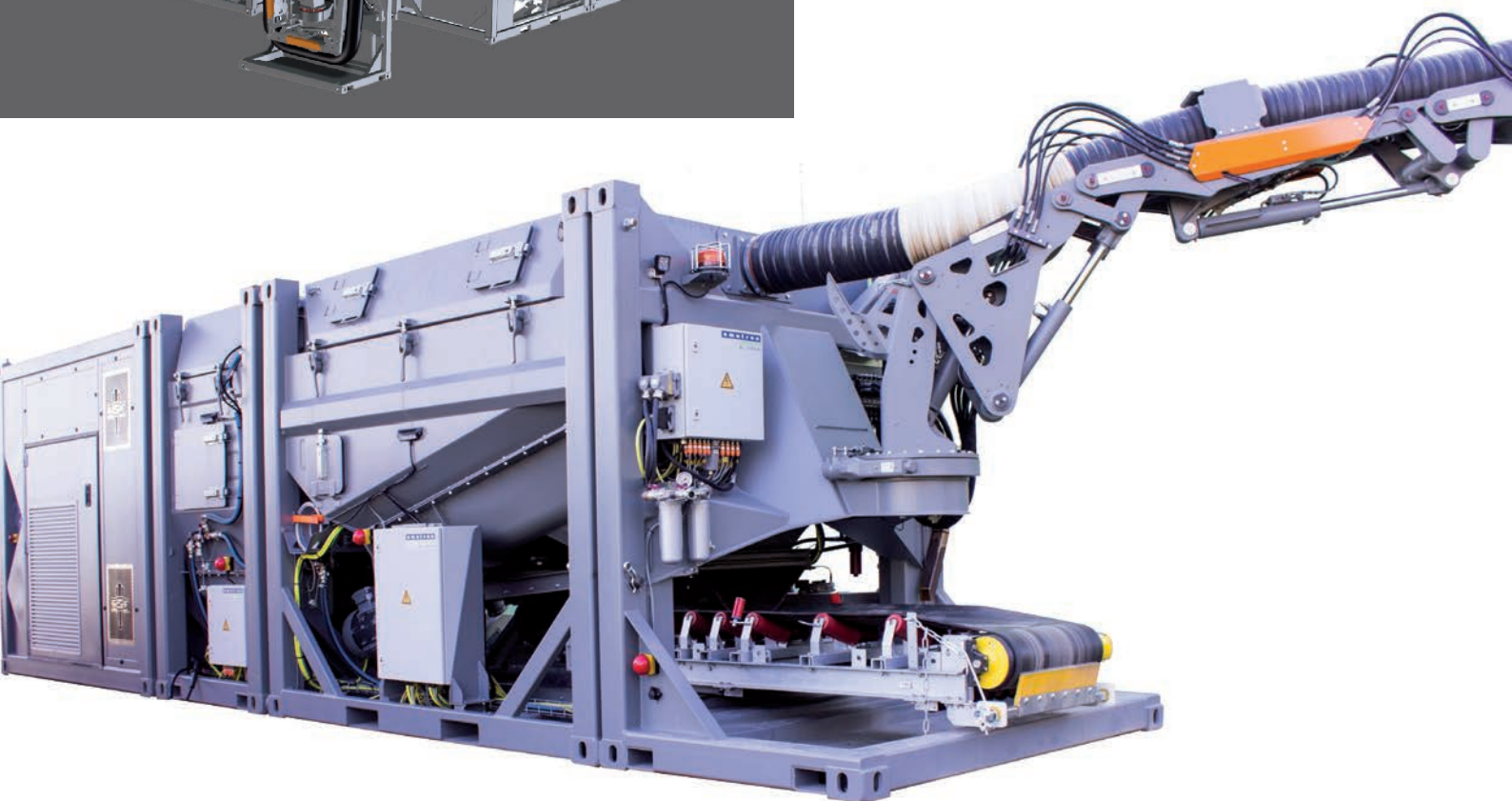
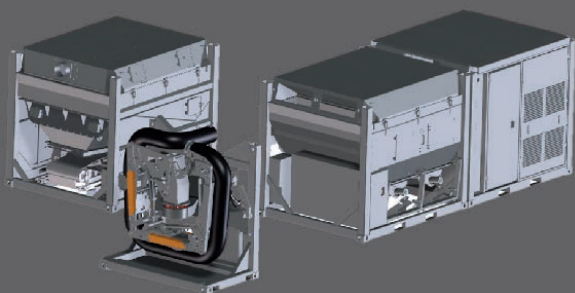




# ESE S

The standardised modular suction system





# Variable end electric

RSP's aim is to apply the advantages of an emission-free, electrically powered suction attachment in various sectors of industry, the construction industry and other fields of activity.

The modular design of an ESE S system serves as the basis, which can be operated stationary or built on a mobile substructure.

The individual modules are standardised according to ISO 668 container dimensions in width and height and vary, depending on the design, only in length (5ft or 10ft).

This design makes them quick to replace and easy to transport. The individual modules can be combined in different ways, depending on requirements.

Our **module family** consists of:

- 1. Generator module**
- 2. Fan module**
- 3. Filter module**
- 4. Material module**
- 5. Hose carrier module**

According to requirements and field of application, additional options such as compressor or high-pressure water system selected.

The power supply for the electric drive can be provided by a generator module. However, the system can also be connected to the existing power grid.

# More modules for more flexibility

## Generator module:

- Can be rented.
- An own module is in development in order to be adapted to the EU6 specification.
- Not necessary, however, if the system is connected to an existing mains supply.
- Alternatively, a replaceable battery module would also be conceivable.

## Fan module:

- Proven high-performance double fan with direct electric drive
- Optionally, compressor und water system can be incorporated.
- All components are driven purely electrically, water-cooled and controlled by inverters.

## Filter module:

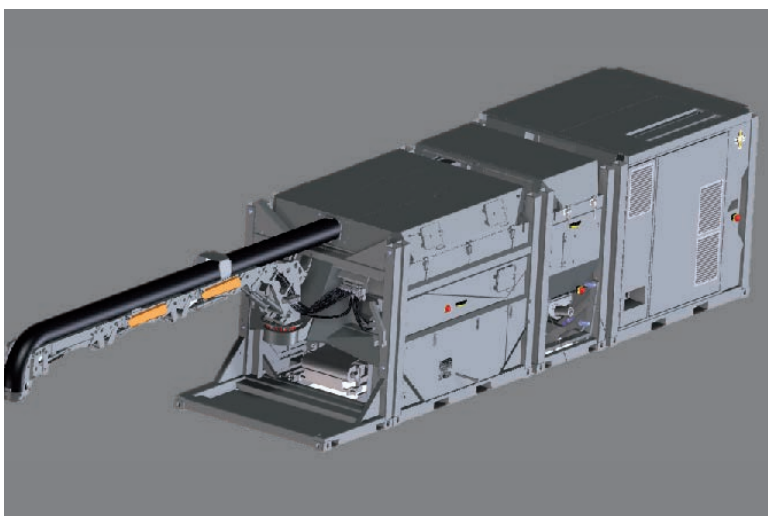
- Including 50 filter cartridges

## Material module:

- Available in different sizes according to customer requirements
- Discharge possible through flap downwards or conveyor belt to the rear.

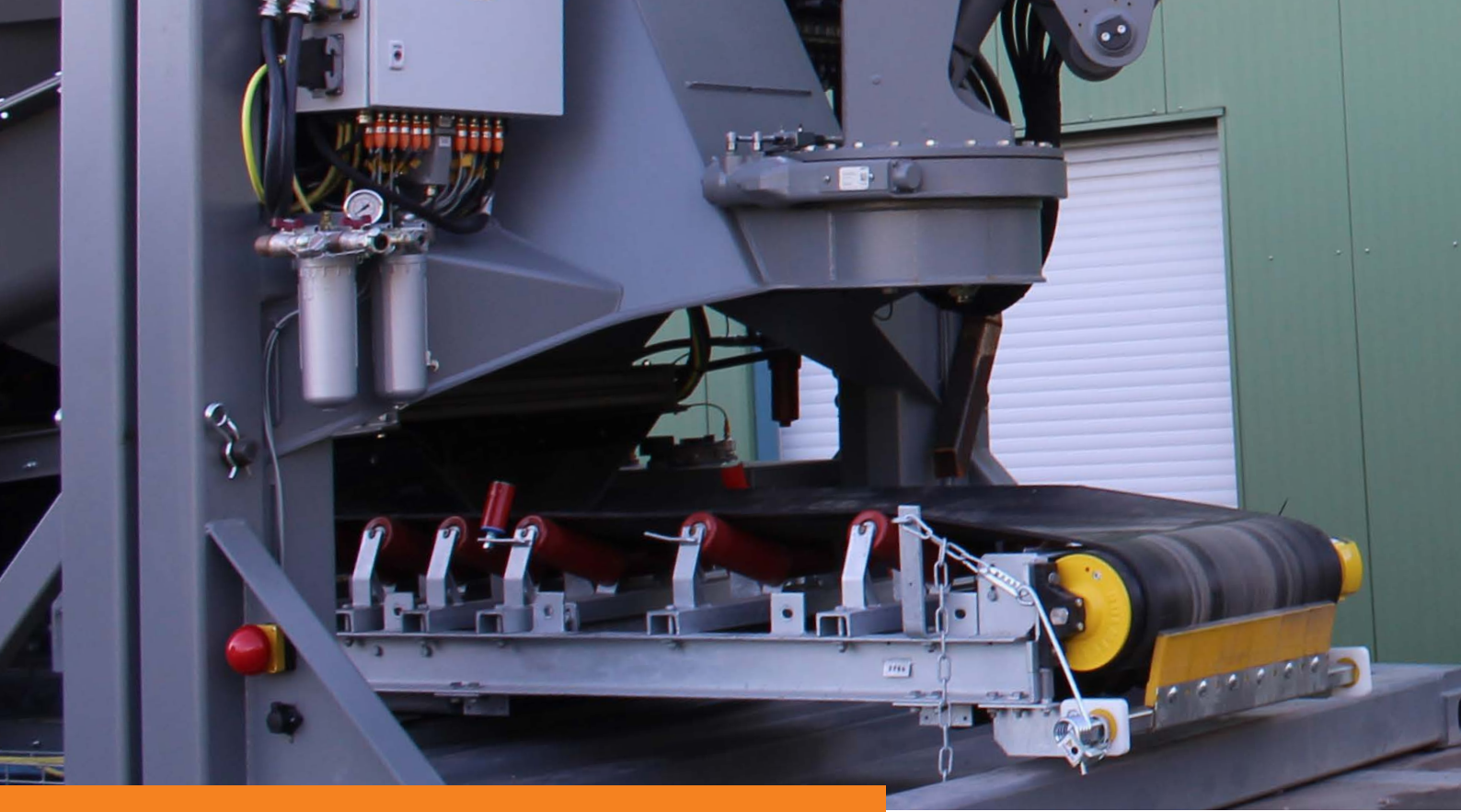
## Hose carrier module (jib)

- Serves as a hose guide and intake of the sucked material.
- Its central design enables symmetrical coverage of the suction radius.
- An electrically driven hydraulic unit can be integrated into the module.



## Variable integration: Truck, track wagon, trailer or stationary base





Due to different requirements and specifications from our customers, individual additional solutions are always possible or in demand.

Please submit us your challenge so that we can develop and build your version of an individual suction station.

Your contact person on-site:



**RSP GmbH & Co. KG**

Zum Silberstollen 10, D-07318 Saalfeld

Telephone: +49 3671 5721-0

Fax: +49 3671 5721-21

info@rsp-germany.com

www.rsp.com

